

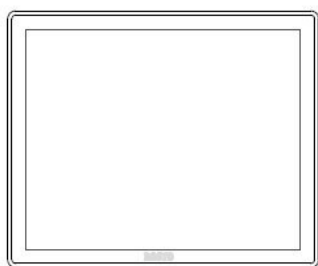
数位画布
快速使用指南
Interactive Pen Display
Quick Guide

”

1 开箱检查: Incoming inspection

A)检查产品外箱是否完好无损 Check the products box is in good condition;

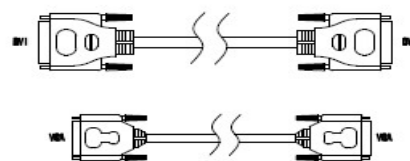
B)阅读快速指南,检查配件盒中附件 Read the quick guide, check the accessories;



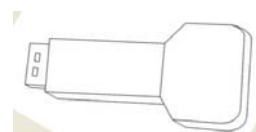
手绘屏 Digital Panel



支撑脚 Stand



VGA/DVI 线 Cable



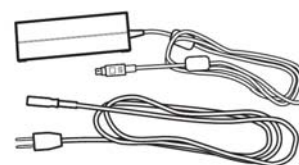
Stylus, Nibs, Mental ring 压感笔 (笔芯, 笔芯更换器) 压感笔充电器 Charger



清洁布 Cleaning cloth



驱动 Driver CD



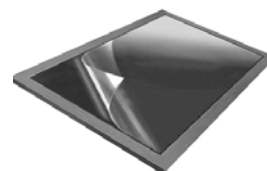
电源线 DC Cable



说明书 Quick guide



保修卡 Warranty Card



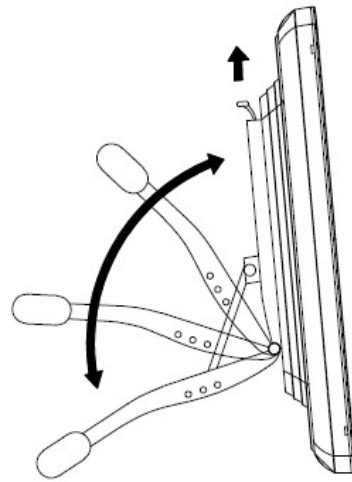
保护膜 Film

注意：如果上述附件欠缺或损坏请速与您的经销商联系。

Note: Any lack or damage, Please contact local dealer ASAP

2 支撑脚安装及连接线使用说明 Stand usage and cable connection instruction

A) 调整支撑脚角度 Stand angle adjusting : 为方便设计人员使用,可以通过拉起 Stand 顶部的扳扣释放机关向上或向下调整角度,整个过程可以单手操作完成; To facilitate the designers to use, you can pull up the release of Stand at the top to adjust the angle by pull body up or down , the whole process can be completed with one hand operation;



注意: 在操作过程中, 请选择合适的环境并注意保护好屏幕, 人为损坏不属于保修范围;

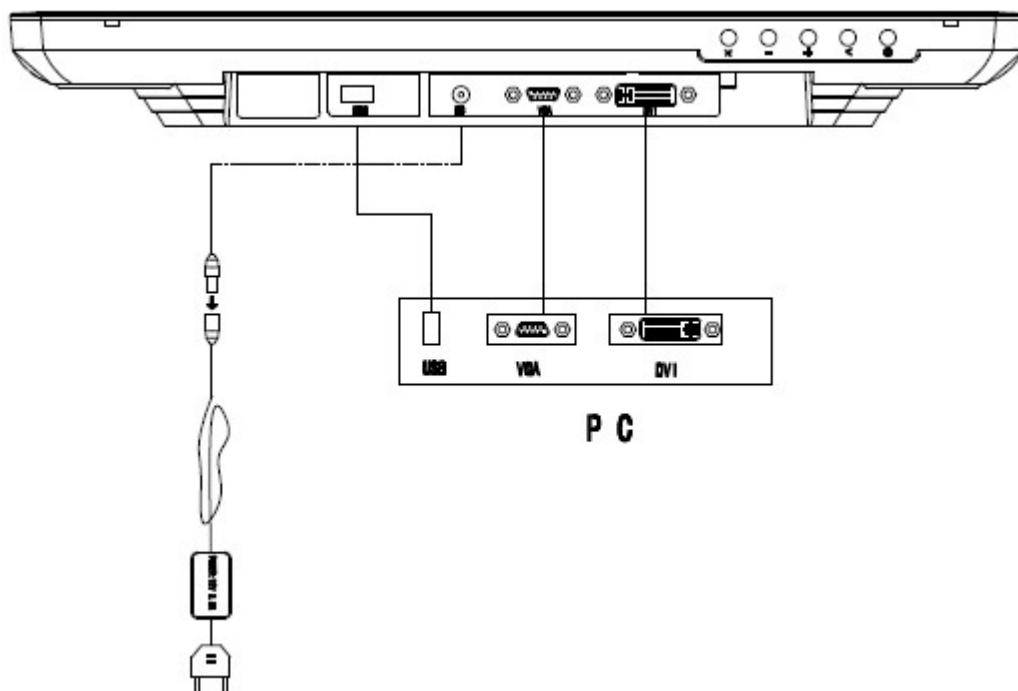
Note: During operation, Please select the appropriate environment, attention to protecting the screen, man-made damage is not covered by the warranty;

D) 线连接 Cable connection : 本产品配有 VGA 线, HDVI 线, 电源线和 USB 线, 使用时, 首先连接好 USB, 视频线 (VGA, HDMI) 和电源线, 连接电源到 12V,3-3.3A

This product is equipped with a VGA cable, HDVI line, power cord and USB cable, when used, first connect the USB, video cable(VGA, HDMI) and power cord, connect the power to 12V ,3-3 .3 A

注意: 建议使用 DVI 高清连接, 显示效果更稳定

Note: Recommend the use of high-definition DVI connection, display more stable



3 驱动程序安装 Driver Software Installation

3-1 压感笔驱动程序安装 stylus driver software installation

1. 确保设备接线正确后，启动计算机及液晶手绘屏
2. 将 CD 插入光驱，执行“SETUP”安装文件，根据电脑的操作系统选择合适的安装驱动；
3. 当驱动安装完成后，手写小图标会出现在屏幕右下角，这表示手写驱动程序安装成功（注：Windows7 操作系统不会出现）；放手写笔于屏幕，测试光标跟随手写笔的移动而移动，手写笔功能与鼠标功能类似，可完全取代鼠标的操作功能。

1. Ensure that the equipment wiring is correct, start the computer
2. Insert the CD into the drive, execute "SETUP" installation file, according to the computer's operating system to choose the right drivers installed;
3. When the driver installation is complete, the small hand icon appears in the lower right corner of the screen, which means hand-written driver software installed successfully (Note: Windows7 operating system will not appear); put the stylus on the screen, test whether the cursor follow the stylus or not, stylus features and functionality similar to the mouse, you can completely replace the mouse operation function.

3-2 快捷键软件安装 Express key driver installing (available for 19M only)

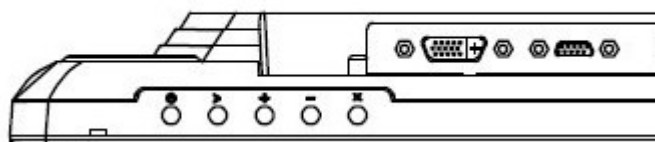
1. 执行“SETUP”安装文件，根据电脑的操作系统选择合适的安装驱动
Execute SETUP file, select the appropriate drive according to the computer's operating system
2. 安装时可选择是否在桌面上或“开始菜单”中生成快捷键

注意：在安装软件前,请确认电脑是用的哪种操作系统，手写笔驱动程序暂时不支持苹果的操作系统

Note: Before installing the software, make sure the computer is using what operating system, stylus-driven software is not support apple's MAC operating system

4 屏幕调整按键 Screen adjust buttons

1) 屏幕调整按键对应名称 corresponding name of Screen adjust buttons

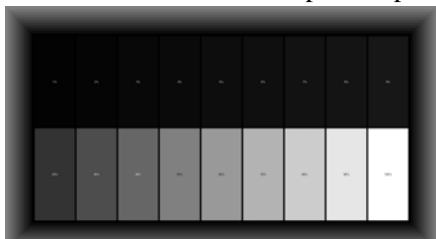


- > 菜单/确认 Menu/Enter
- ×退出/自动调节 Return/Auto
- 向下 Down
- + 向上 Up
- 开关机 Power

2) VGA 属于模拟信号，为达到更好的显示效果，在使用前请先按以下步骤调整：

VGA is analog signal, please using the following steps to adjust to achieve better display;

A) 打开 16 级灰阶图： Open the picture file of 16 gray-scale



B) 按“菜单”---按“向下”把光标移至“功能菜单”处并进入

Press "Menu" --- click "down" to move the cursor to "function menu" and enter

C) 分别选择“功能菜单”中的两个选项做自动调节；

Respectively selected "function menu" of the two options to do auto-adjust

其它细节，如亮度，对比度及颜色则根据客户特别需要另外调节；

Other details, such as brightness, contrast and color are also adjusted according to customer special needs

3) DVI 属于数字信号，无需对色彩进行调节；

DVI is digital signal, no need to adjust the color

5 手绘笔的使用 Stylus usage

- 1) 充电: 在使用手绘笔前,需要对手绘笔充电,把笔插入充电器中,把充电器插入电脑 USB 孔,即可对笔进行充电,充电过程中,充电器 LED 灯红灯亮,当充满电后,LED 显示蓝色(充电时间大约为 2 小时),在使用过程中,可以根据笔上的 LED 灯显示来确认是否需要充电;每次充满电后,大约可以连续使用 80 小时;

Charge: In the use of hand-drawn pen, you need to charge for the stylus, the stylus into the charger, the charger into the computer USB port; in the process of charging, the charger LED lights red, when fully charged, LED lights blue (charging time is approximately 2 hours), In use, you can determine whether stylus needs to be charged according to the LED lights color, each fully charged, stylus can be used continuously for 80 hours;

- 2) 启动:手绘笔的启动可以通过笔芯压力和笔身的按键启动,启动后 LED 灯亮显示;配合不同软件手绘,真实实现笔划的粗细,浓度变化, X/Y/Z 3D 压感性能居世界领先水平;

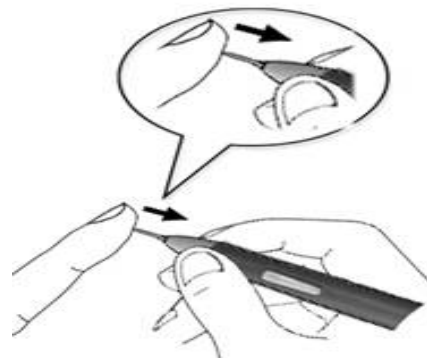
Power on: Stylus could be power on through the side button click or the nibs pressure, LED lights display starts, Hand-painted with different software, to achieve real stroke thickness, concentration, X / Y / Z 3D pressure-sensitive performance reached world leading level;

- 3) 快捷键:手绘笔笔身上有一个快捷键,可以作为鼠标右键使用;

Express key: Stylus pen body has a express key, can be used as use the right mouse button

- 4) 更换笔芯:笔芯为易损件,长期使用过程中会有磨损,需要更换;更换时用配件中的换笔金属环夹住旧笔芯轻轻往外拉出,用手指捏住新的笔芯往里塞入即可;(注意在拉出及塞入笔芯时需与笔身保持水平)

Nibs replacement: Nibs is wearing parts, long-term use there will be wear and tear and need replacing; In replacement, use the metal ring clamped gently and pull out the old nibs, pinch the new nibs with fingers and stuffed inside (Note: The take out and stuffed nibs, the gestures and the pen body needs to maintain the same level)



6 Trouble shooting

不良现象 Trouble	建议 Shooting
无画面 No picture	<ol style="list-style-type: none"> 1. 检查电源及信号线是否确实接上 Check the power and signal cable is connected 2. 检查手绘屏的电源开关是否打开 Check the panel power is switch on 3. 调整亮度及对比度 Adjust the brightness and contrast
屏幕颜色异常或不同步 display unusual or non-synchronous color screen	<ol style="list-style-type: none"> 1. 检查视频线是否与电脑连接正确,紧固; Check the VGA/DV video cable is properly connected to the computer, fastening; 2. 检查电脑显卡是否支持手绘屏分辨率 Check whether the computer graphics card supports the digital panel resolution
画面不在屏幕的中间位置 Screen is not in the middle of a screen	1 使用 OSD"水平调整"与"垂直调整"的选项来调整画面的正确位置或执行自动调整 using "level adjustment" and "vertical adjustment" option to adjust the screen (index:Screen adjust buttons)
画面出现抖去或波纹 Screen appears to shake or wave	<ol style="list-style-type: none"> 1. 请做一次自动调整 Perform a automatically adjust 2. 自动调整无效,请检查是否周围有磁性的东西影响 If automatic adjustment is invalid, Check whether there are magnetic effects around
压感笔无功能 No function stylus	<ol style="list-style-type: none"> 1. 请检查屏幕右下方是否出现手写板的图示,若有出现,可能是压感笔的开关未开或是电池没电,请更换新电池 Please check the bottom right hand icon is displayed, if there is, the stylus switch may not open , or are the battery is dead, please replace the battery 2. 若屏幕右下方没有出现手写板的图示,代表手写驱动程序没有执行,请将 USB Cable 拔掉重插或重新

	<p>开机</p> <p>If the bottom right hand icon does not appear that the driver is not running, please re-plug USB Cable unplug, or restart</p> <p>3. 若经上述步骤后，手写板图示仍未出现，请重新安装驱动程序或将计算机中其它手写板软件暂时清除</p> <p>If after these steps, the hand icon still does not appear, please re-install the driver, or temporarily remove the other computer handwriting software</p>
<p>光标乱跑 The cursor run around</p>	<p>1. 请将 USB Cable 拔掉重插或重新开机</p> <p>please re-plug USB Cable unplug, or restart</p>
<p>手绘精准度不够</p> <p>Accuracy is not enough</p>	<p>WIN 7 的操作系统下，请在“控制面板 / TABLET PC 目录下的屏幕效正，XP 的操作系统下，请 ”单击右下角手写板图标 / 设置 / 效正“</p> <p>WIN 7 operating system, choose and perform the calibration function in the directory of "Control Panel / TABLET PC/ calibration "</p> <p>Windows XP operating system, click the hand icon in screen bottom right, choose and perform a screen calibration procedure which in the directory of / settings / calibration</p>
<p>手绘屏所支持的分辨率</p> <p>The resolution supported</p>	<p>640 x 480@60Hz / 640 x 480@72Hz / 640 x 480@75Hz /</p> <p>800 x 600@60Hz / 800 x 600@72Hz / 800 x 600@75Hz / 1024 x 768@60Hz / 1024 x 768@70Hz / 1024 x 768@75Hz / 1280 x 1024@60Hz / 1440 x 900@75Hz</p>